

1) CONSTRUCTION:
 CONDUCTOR: 16 AWG 19/.0117 STRANDED TINNED COPPER
 INSULATION: POLYVINYLCHLORIDE, .016" NOM. WALL THICKNESS
 CABLE: (4) INSULATED CONDUCTORS TWISTED TOGETHER TO FORM A CABLE CORE.
 JACKET: POLYVINYLCHLORIDE, CHROME GRAY, .032" NOM. WALL THICKNESS
 NOM. DIA.
 .057"
 .089"
 .215"
 OVERALL CABLE DIAMETER .279"

2) PHYSICAL PROPERTIES:
 TEMPERATURE RATING, MAX. 60°C, 80°C & 90°C
 TEMPERATURE RATING, MIN. -20°C
 WT./M', NOM., NET. 57.8 LBS.

3) ELECTRICAL CHARACTERISTICS:
 CAPACITANCE, MUTUAL, NOM. 28 PF/FT.
 DIELECTRIC WITHSTANDING, MIN 1500V RMS
 VOLTAGE RATING, MAX. 300V
 D.C. RESISTANCE, MAX. PER ASTM B286 4.49 Ω/1000'

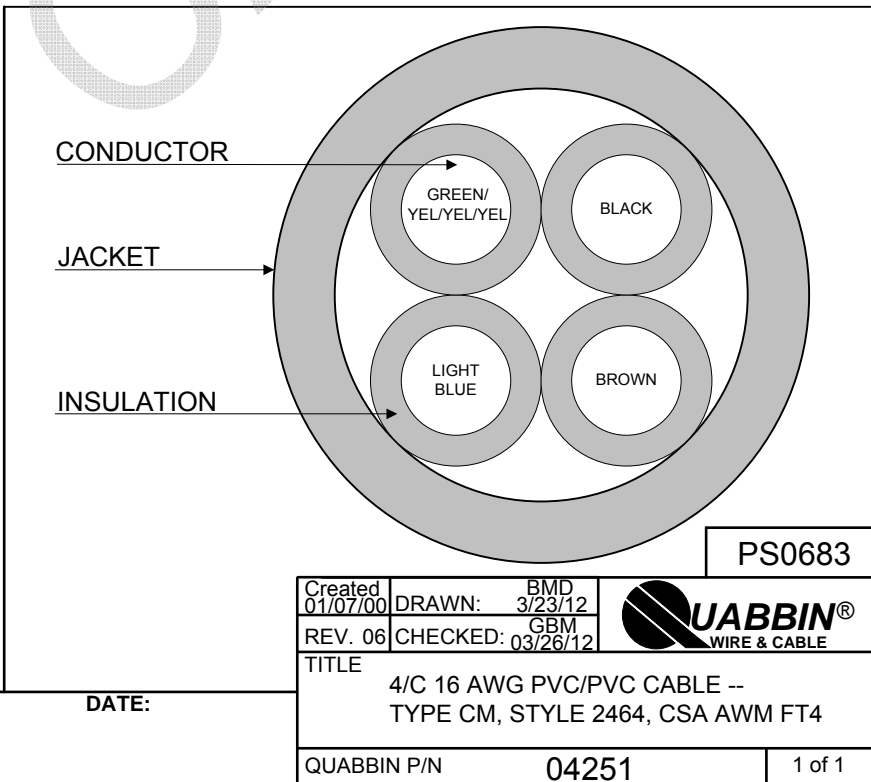
4) AGENCY APPROVALS:
 NEC (UL) TYPE CM
 AWM STYLE 2464
 CSA AWM FT4

5) APPLICATION:
 RoHS COMPLIANT MATERIALS.

6) PRINT:
 E118830 (UL) TYPE CM 16 AWG OR AWM 2464 -- CSA LL51726 AWM I/II A/B 90C 300V FT4 -- RoHS --
(LOT DESIGNATOR)

7) COLOR CODE:
 1. BLACK
 2. BROWN
 3. LIGHT BLUE
 4. GREEN/YELLOW/YELLOW/YELLOW (30% YELLOW MINIMUM)

8) PACKAGING:
 TO BE PACKAGED AS PER QWC'S
 STANDARD PACKAGING



CUSTOMER APPROVAL:

DATE:

Created 01/07/00	DRAWN: BMD 3/23/12	
REV. 06	CHECKED: GBM 03/26/12	
TITLE 4/C 16 AWG PVC/PVC CABLE -- TYPE CM, STYLE 2464, CSA AWM FT4		
QUABBIN P/N	04251	1 of 1